

7.1.2.

The Institution has facilities for alternate sources of energy and energy conservation measures

CONTENTS

Geo tagged photographs of facilities for alternate sources of energy and energy conservation measures:

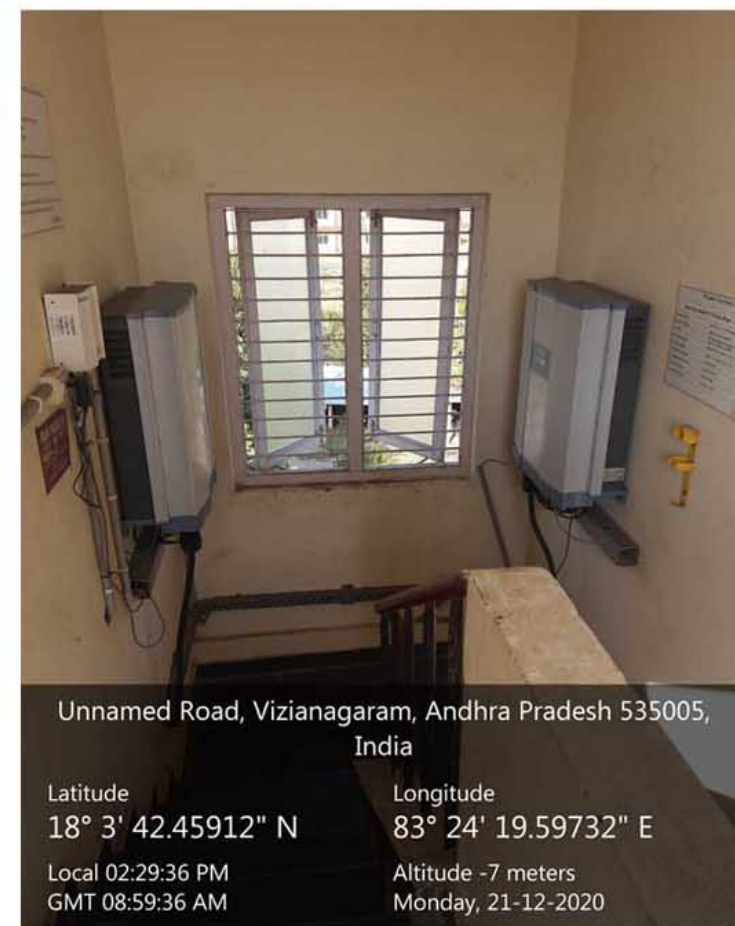
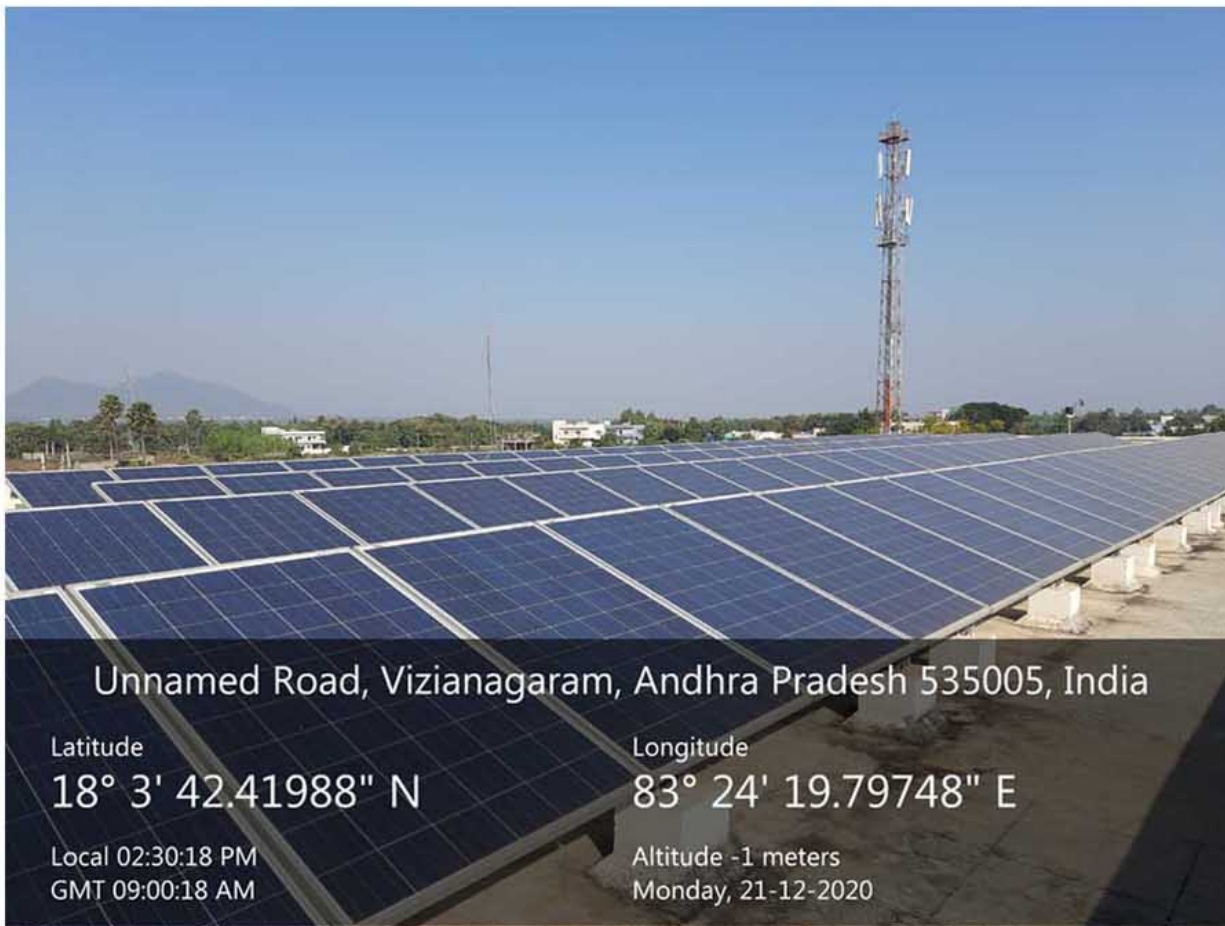
S. No.	Description	Pages
1	Solar Power Plant (400 Kwp)	01 to 06

India has tremendous scope of generating solar energy. The geographical location of the country stands to its benefit for generating solar energy. The reason being India is a tropical country and it receives solar radiation almost throughout the year, which amounts to 3,000 hours of sunshine. This is equal to more than 5,000 trillion kWh. Almost all parts of India receive 4-7 kWh of solar radiation per sq metres. This is equivalent to 2,300–3,200 sunshine hours per year. States like Andhra Pradesh, Bihar, Gujarat, Haryana, Madhya Pradesh, Maharashtra, Orissa, Punjab, Rajasthan, and West Bengal have great potential for tapping solar energy due to their location.

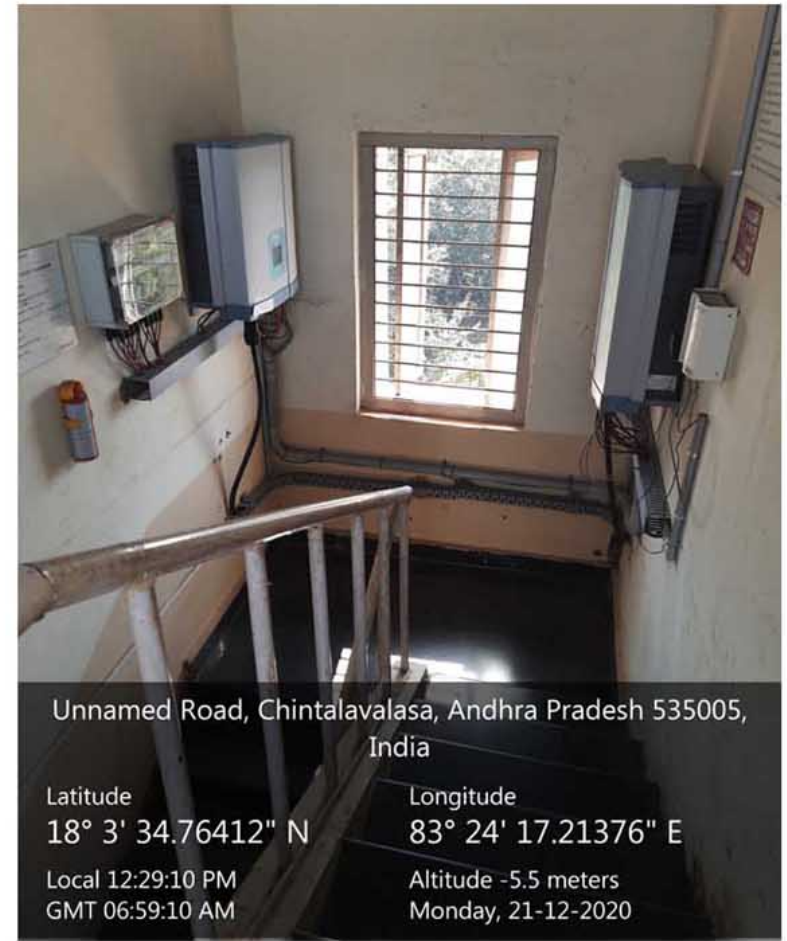
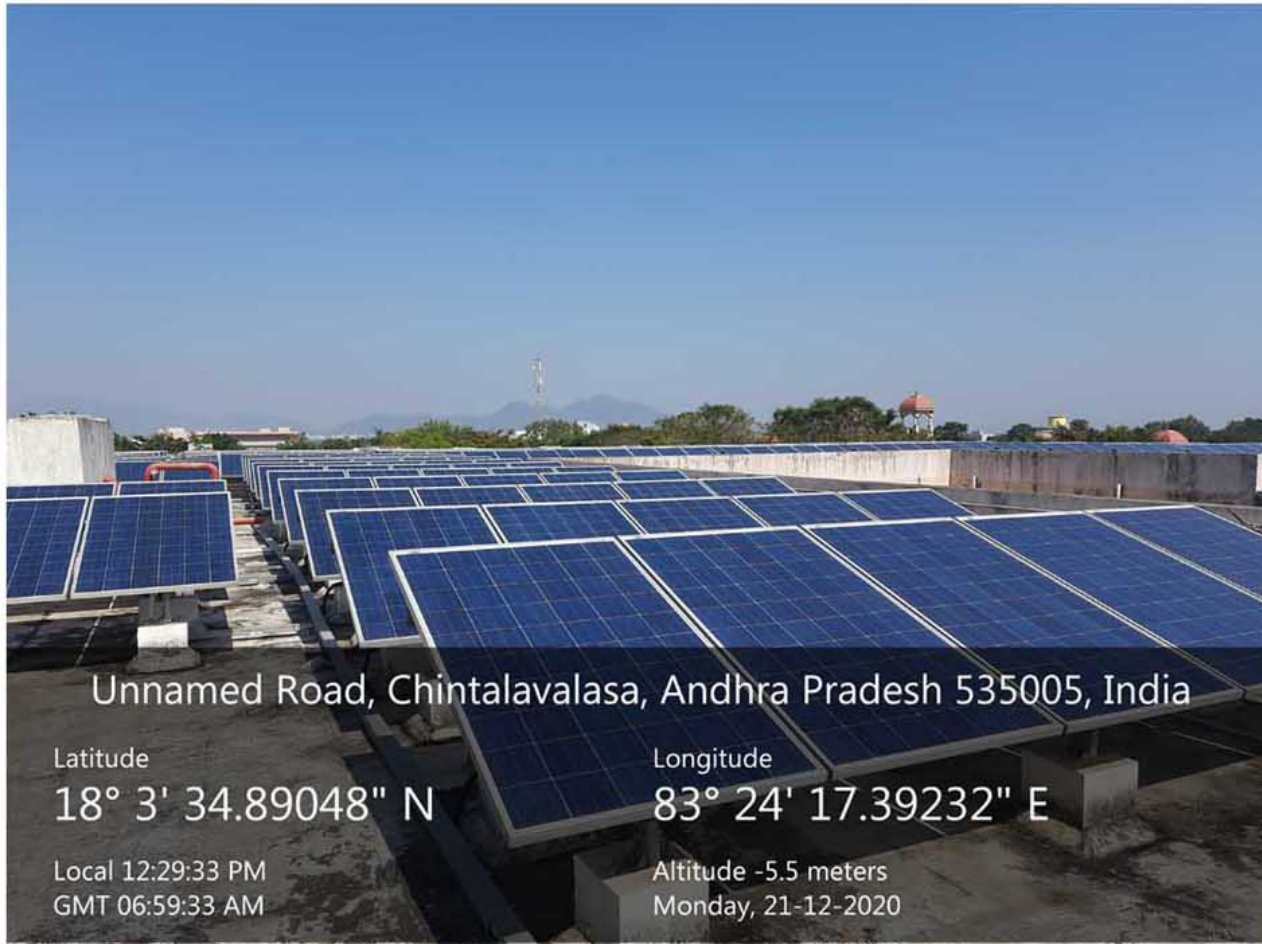
400kWp rooftop solar power plant was installed in December 2016 and was commissioned to operation from 1st January 2017. A total of 17,68,985 units of energy is generated through the solar plant till date and reducing the Carbon Di Oxide footprint by 1415.18Ton (Assuming 0.8kg / kWh).

Out of total solar generation, 6, 66, 625 units of energy has been exported to grid via net metering system. The rest of units has been consumed by the college.

S.No	Year	No of Units generated
1	2017	497254
2	2018	476391
3	2019	450830
4	2020	344510



100Kwp Plant located on rooftop of civil department and associated Inverters



75Kwp Plant located on rooftop of CSE department and associated Inverters



Unnamed Road, Chintalavalasa, Andhra Pradesh 535005, India

Latitude
18° 3' 35.21844" N

Longitude
83° 24' 15.21972" E

Local 11:58:46 am
GMT 06:28:46 am

Altitude -12.2 meters
Monday, 21-12-2020



Unnamed Road, Chintalavalasa, Andhra Pradesh 535005, India

Latitude
18° 3' 35.59752" N

Longitude
83° 24' 14.97996" E

Local 12:00:12 pm
GMT 06:30:12 am

Altitude -8 meters
Monday, 21-12-2020

75Kwp Plant located on rooftop of ECE department and associated Inverters



55Kwp Plant located on rooftop of EEE department and associated Inverter



95Kwp Plant located on rooftop of MECH department and associated Inverters